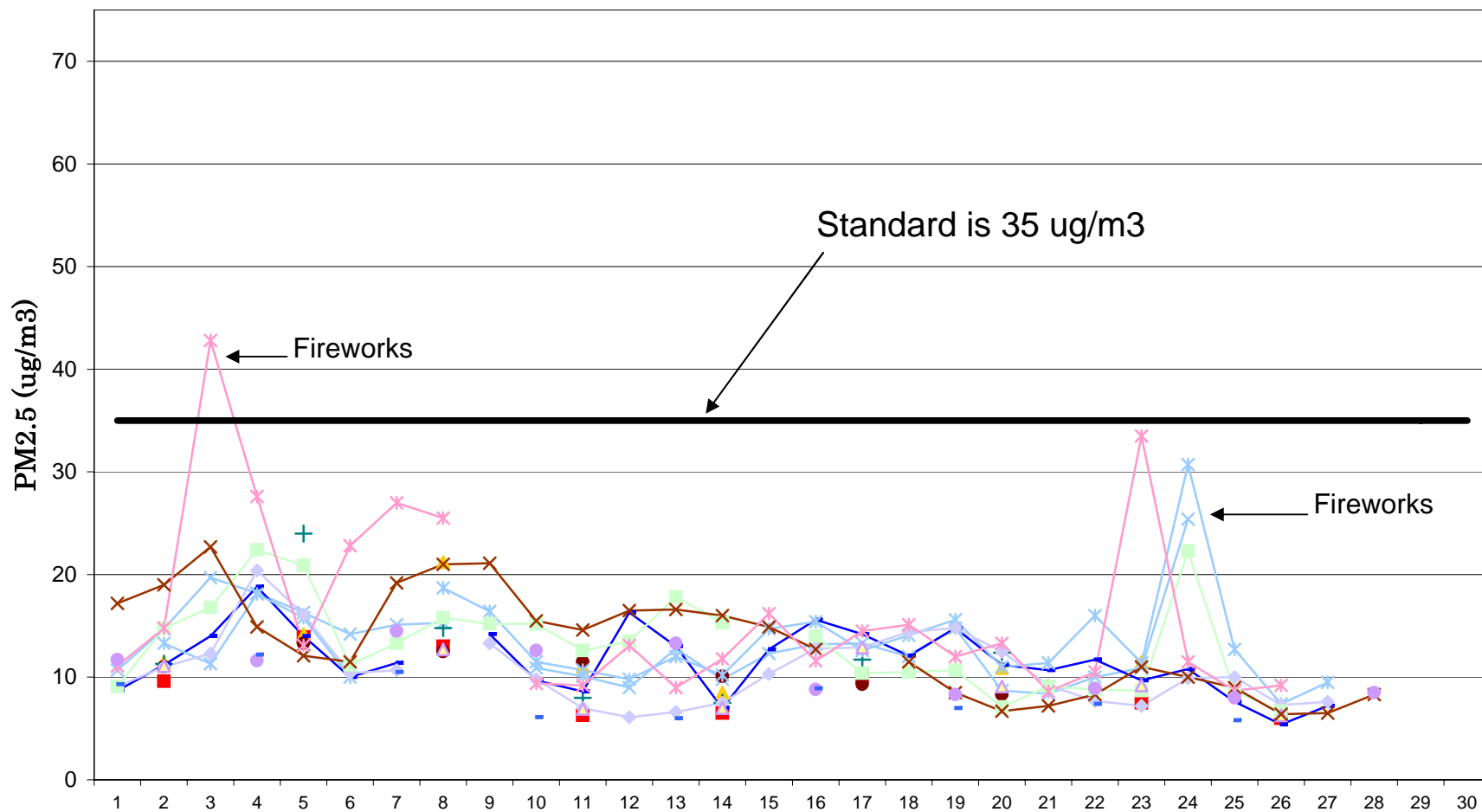


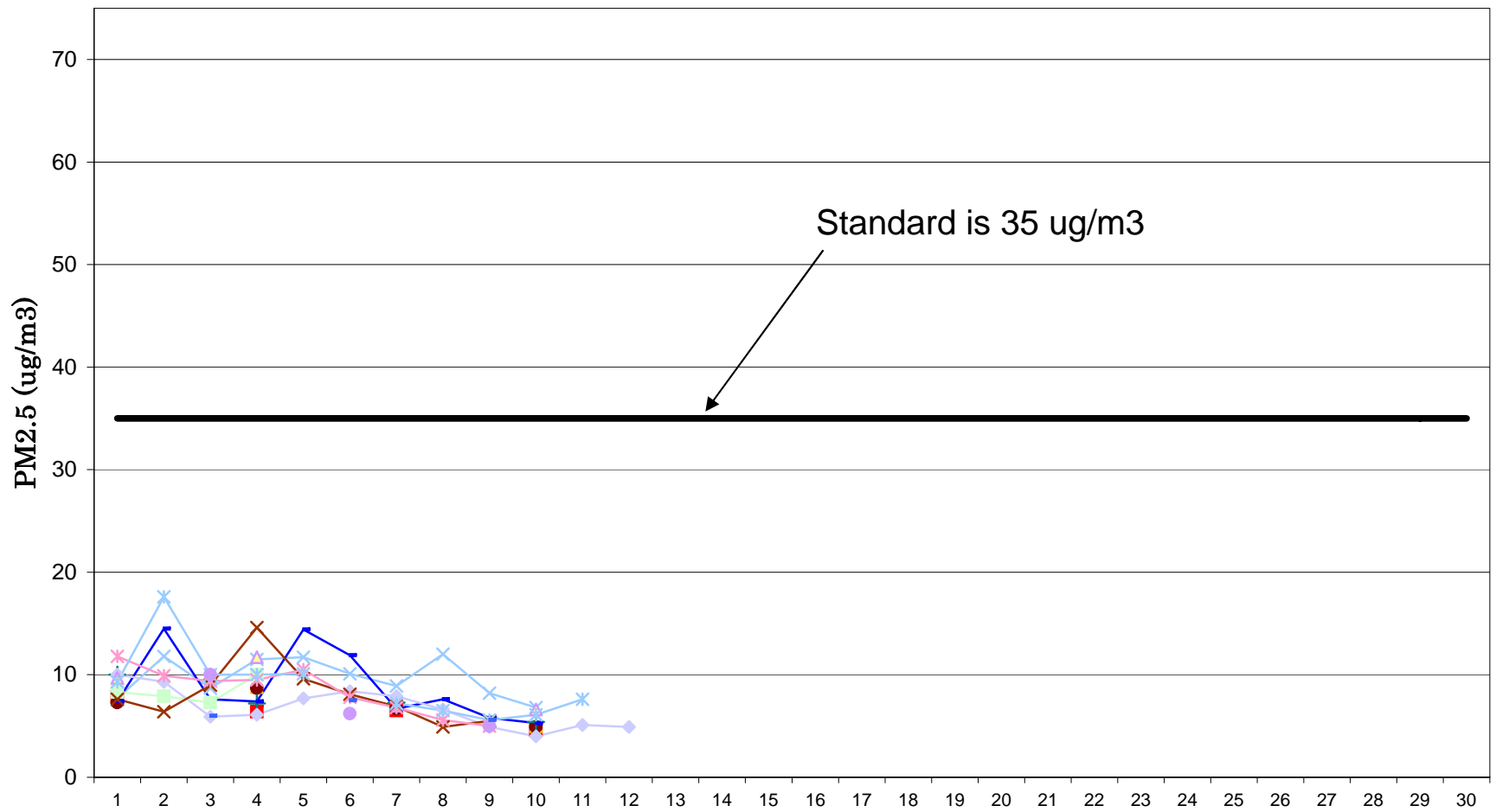
Utah 24-Hr PM2.5 Data July 2008

- Brigham City
- ▲ Bountiful
- ✦ Cottonwood
- ✱ Herriman
- Highland
- + Harrisville
- Hawthorne
- ✦ Rose Park
- ✦ Logan
- Lindon
- ▲ Magna
- ✕ North Provo
- ✱ Ogden
- Spanish Fork
- Tooele
- ◆ Wash. Terrace
- ◆ West Valley
- 24-hr Standard is 35 ug/m3



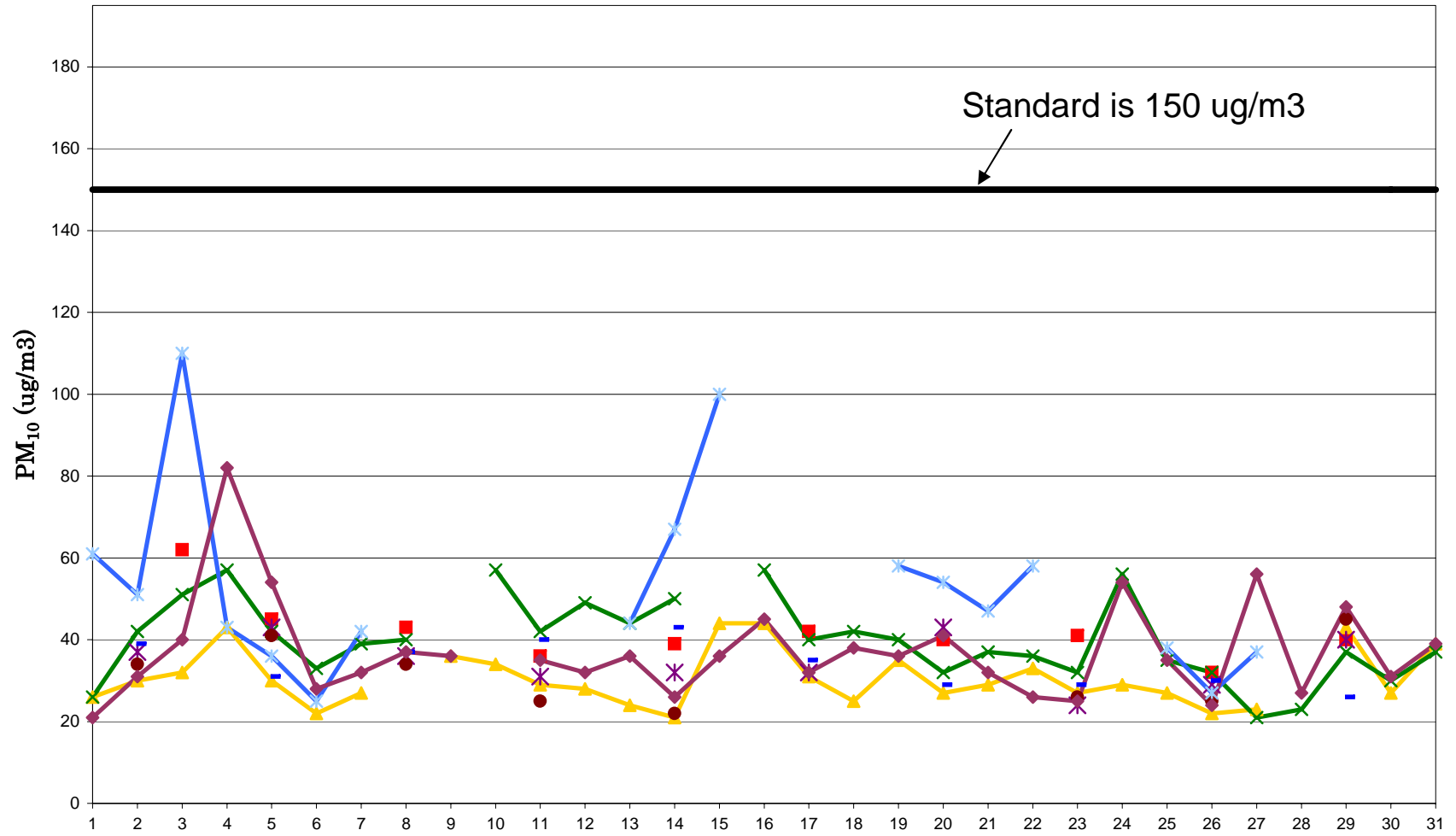
Utah 24-Hr PM2.5 Data August 2008

- Brigham City
- Highland
- Logan
- North Provo
- Spanish Fork
- Bountiful
- Harrisville
- Lindon
- Ogden
- Tooele
- Cottonwood
- Hawthorne
- Magna
- Rose Park
- 24-hr Standard is 35 ug/m3

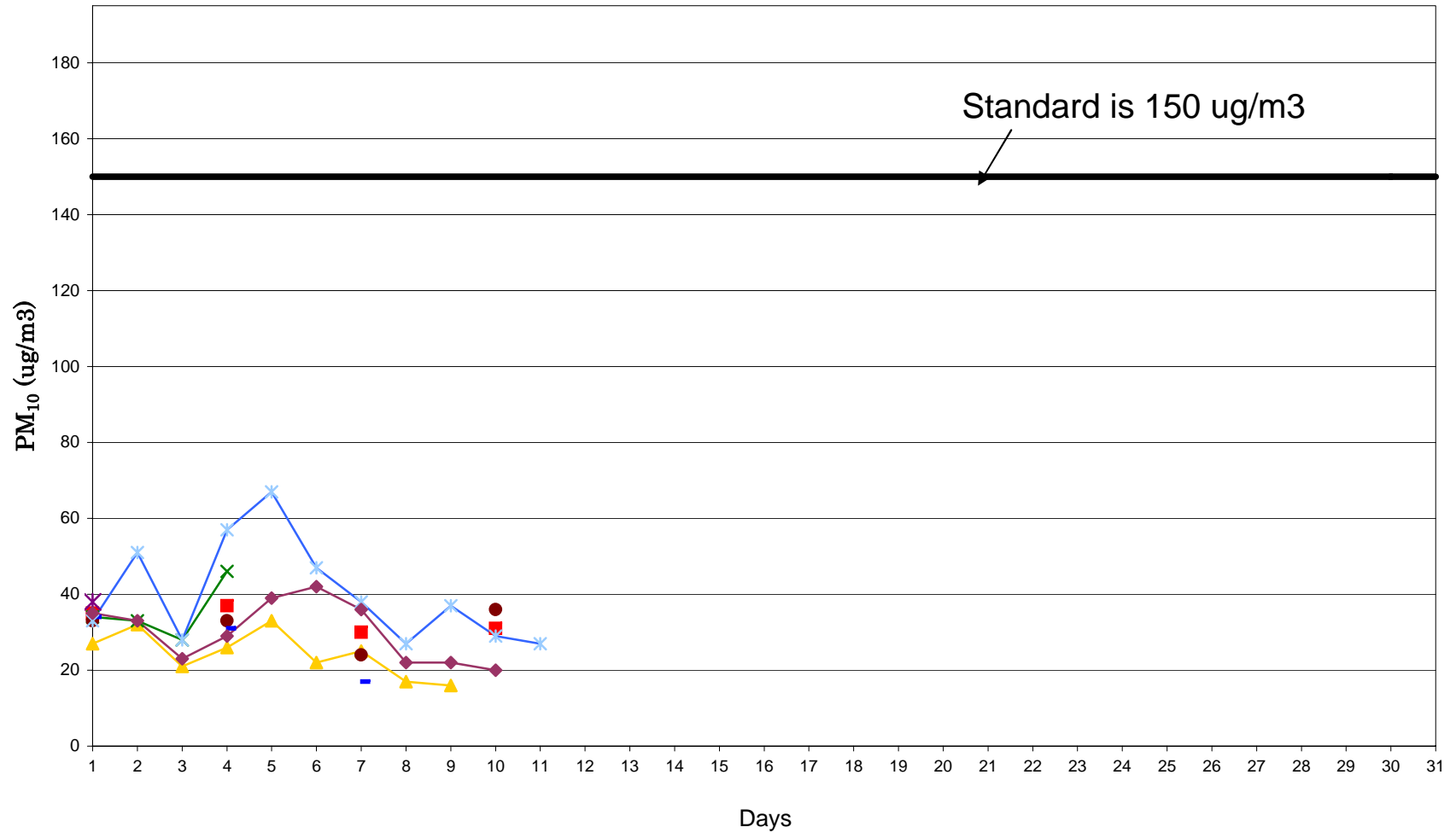
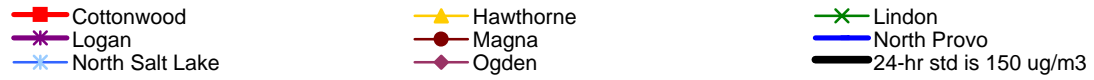


Utah 24-hr PM₁₀ Data July 2008

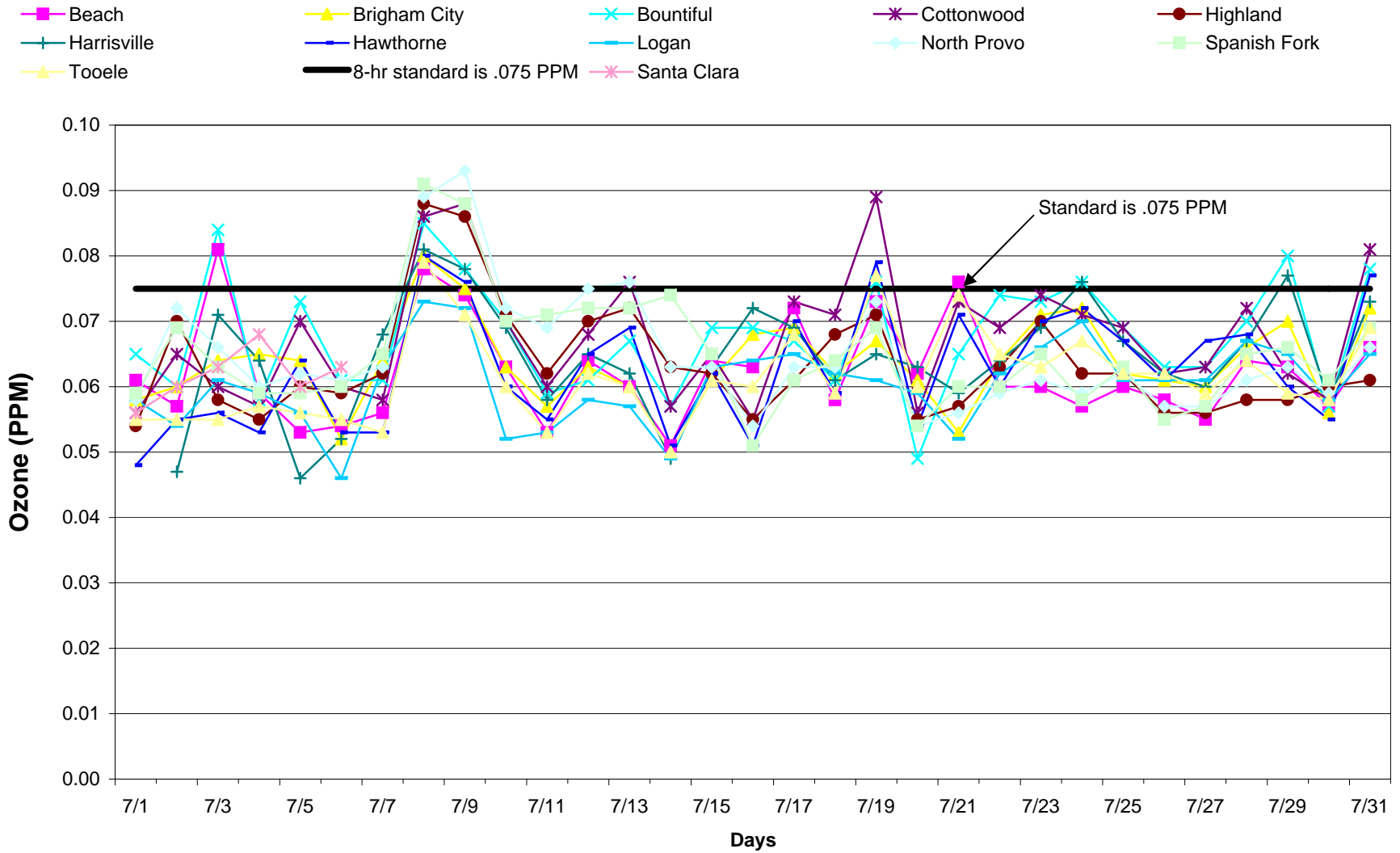
- Cottonwood
- Logan
- North Salt Lake
- Hawthorne
- Magna
- Ogden
- Lindon
- North Provo
- 24-hr std is 150 ug/m3



Utah 24-hr PM₁₀ Data August 2008



Utah 8 Hour Ozone July 2008



Utah 8 Hour Ozone August 2008

