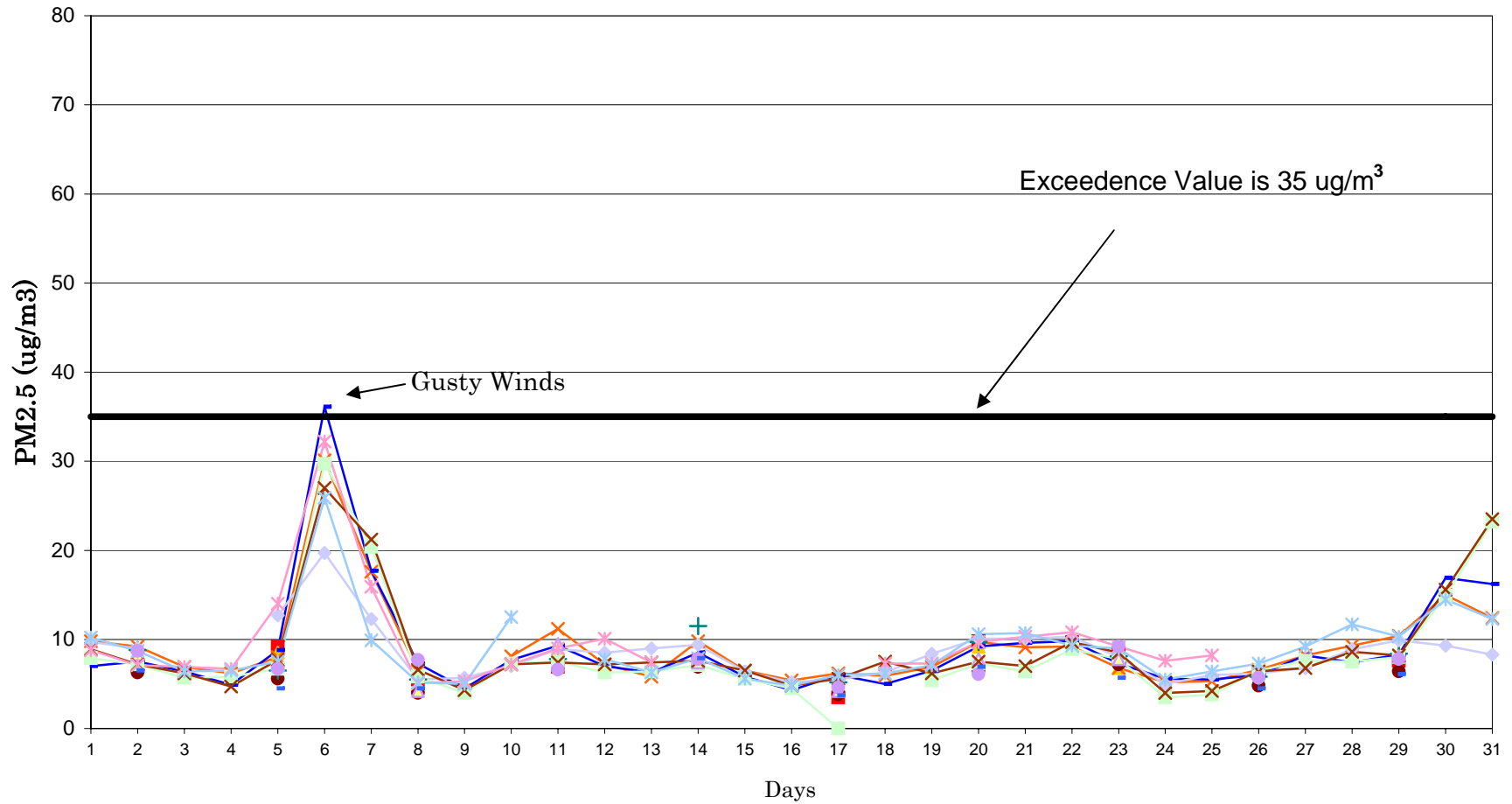


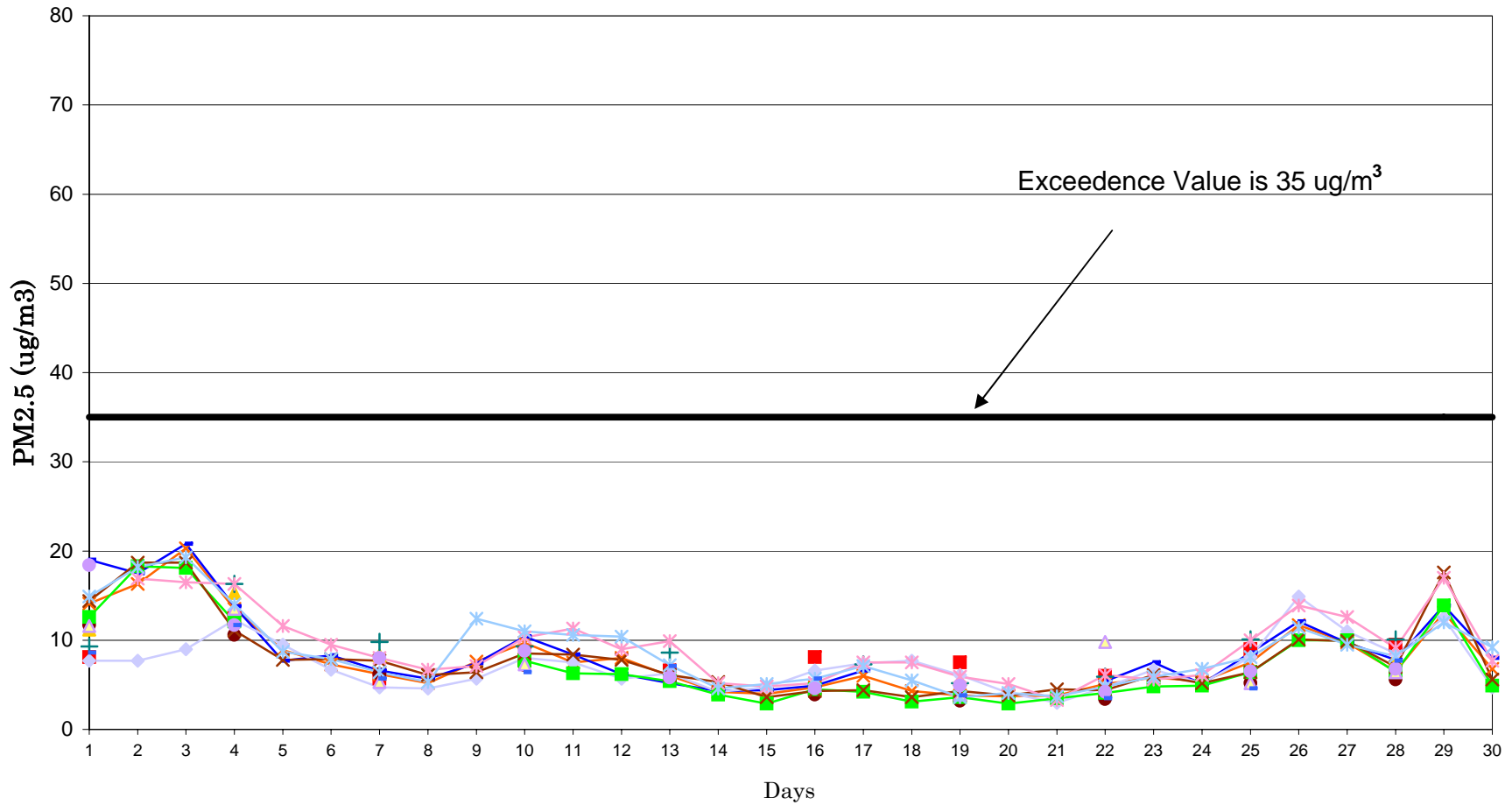
Utah 24-Hr PM2.5 Data August 2009

- Brigham City
 - ★ Bountiful
 - ✕ Cottonwood
 - Highland
 - + Harrisville
 - Hawthorne
 - ◇ Logan
 - Lindon
 - △ Magna
 - ✕ North Provo
 - * Ogden
 - * Rose Park
 - Spanish Fork
 - Tooele
- 24-hr Exceedence Value is 35 ug/m³



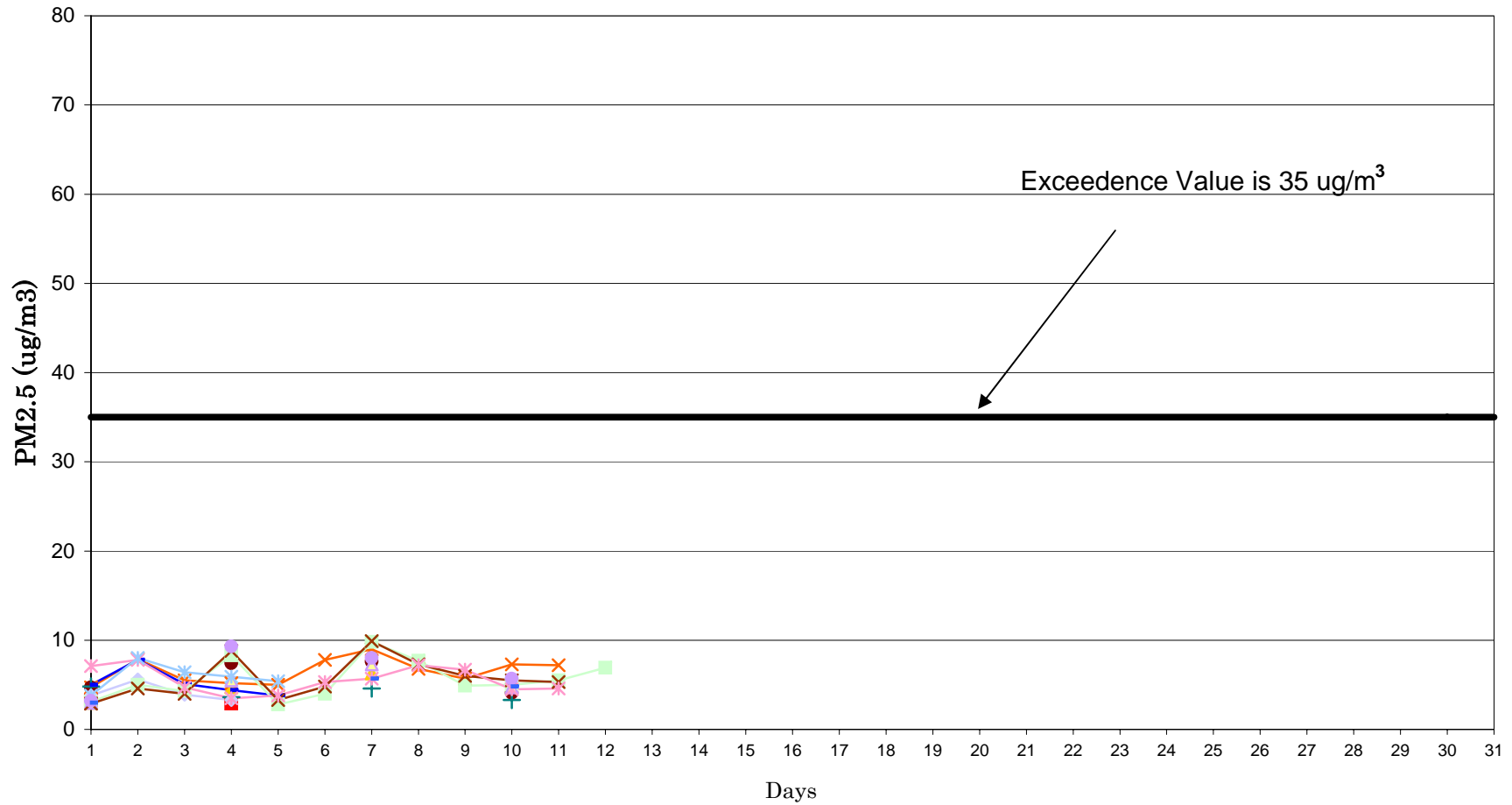
Utah 24-Hr PM2.5 Data September 2009

- Brigham City
- Cottonwood
- Harrisville
- Logan
- Magna
- Ogden
- Spanish Fork
- Bountiful
- Highland
- Hawthorne
- Lindon
- North Provo
- Rose Park
- Tooele
- 24-hr Exceedence Value is 35 ug/m3

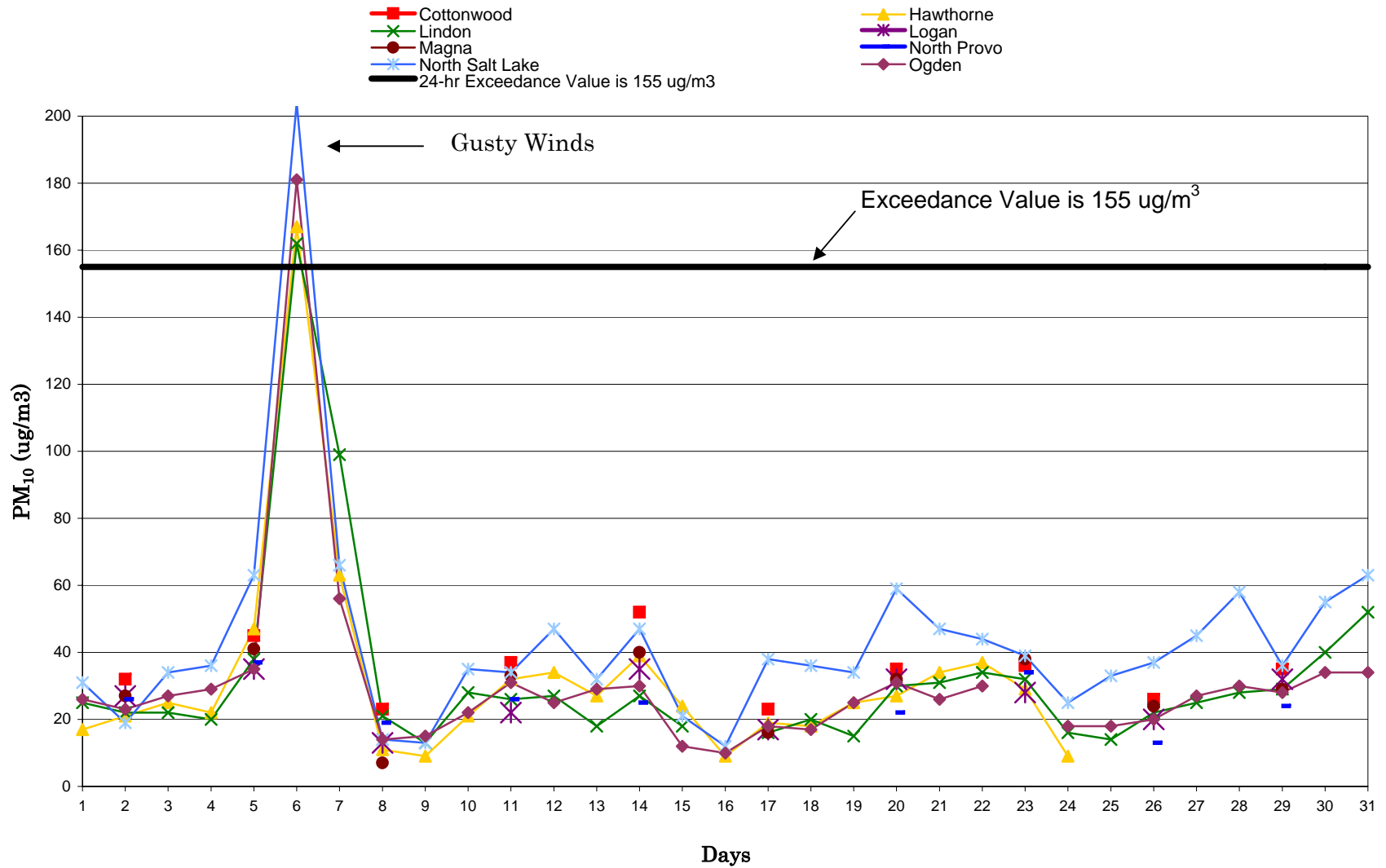


Utah 24-Hr PM2.5 Data October 2009

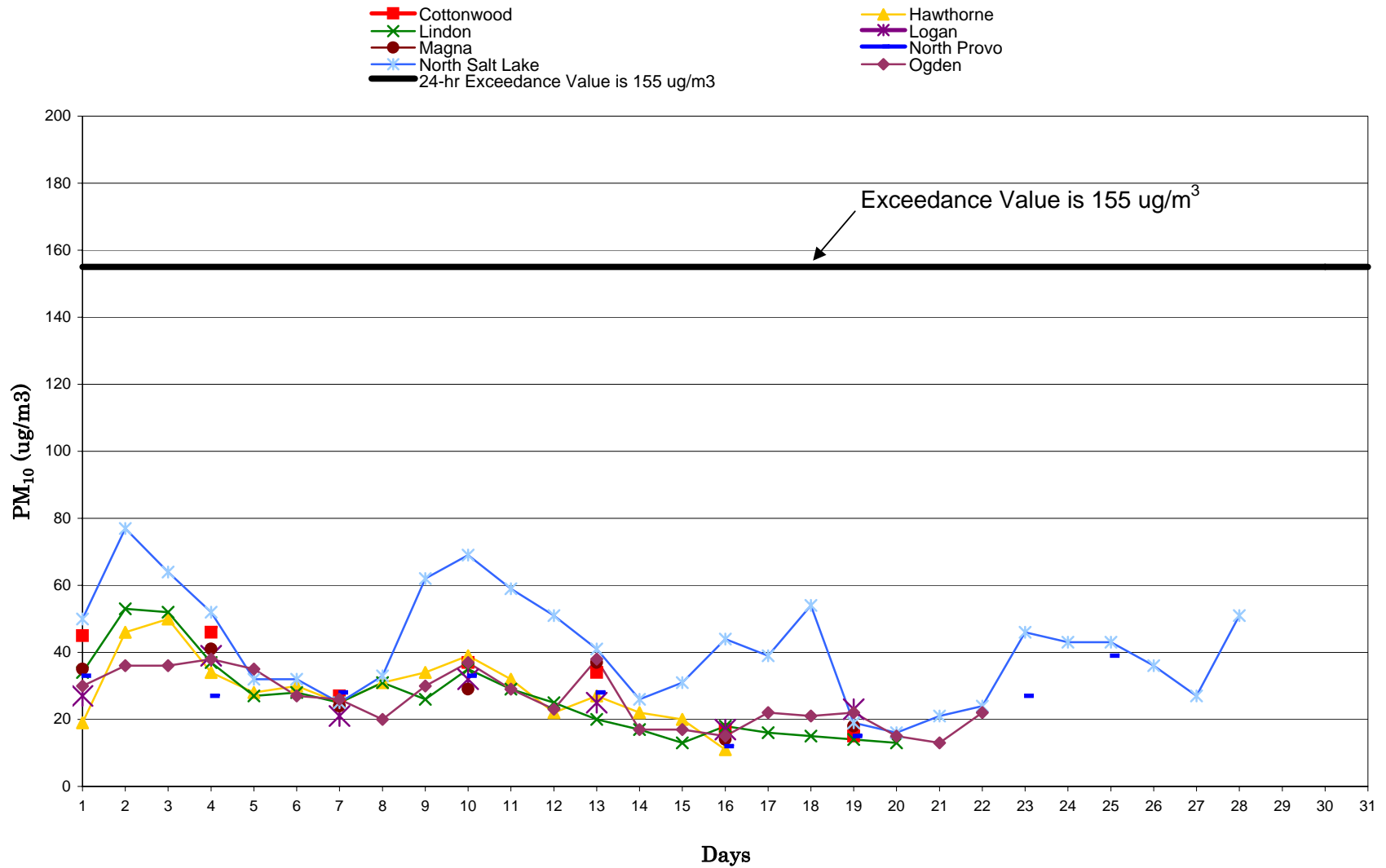
- Brigham City
 - × Cottonwood
 - + Harrisville
 - ◇ Logan
 - △ Magna
 - * Ogden
 - Spanish Fork
 - ◆ Bountiful
 - Highland
 - Hawthorne
 - Lindon
 - × North Provo
 - * Rose Park
 - Tooele
- 24-hr Exceedence Value is 35 ug/m3



Utah 24-hr PM₁₀ Data August 2009

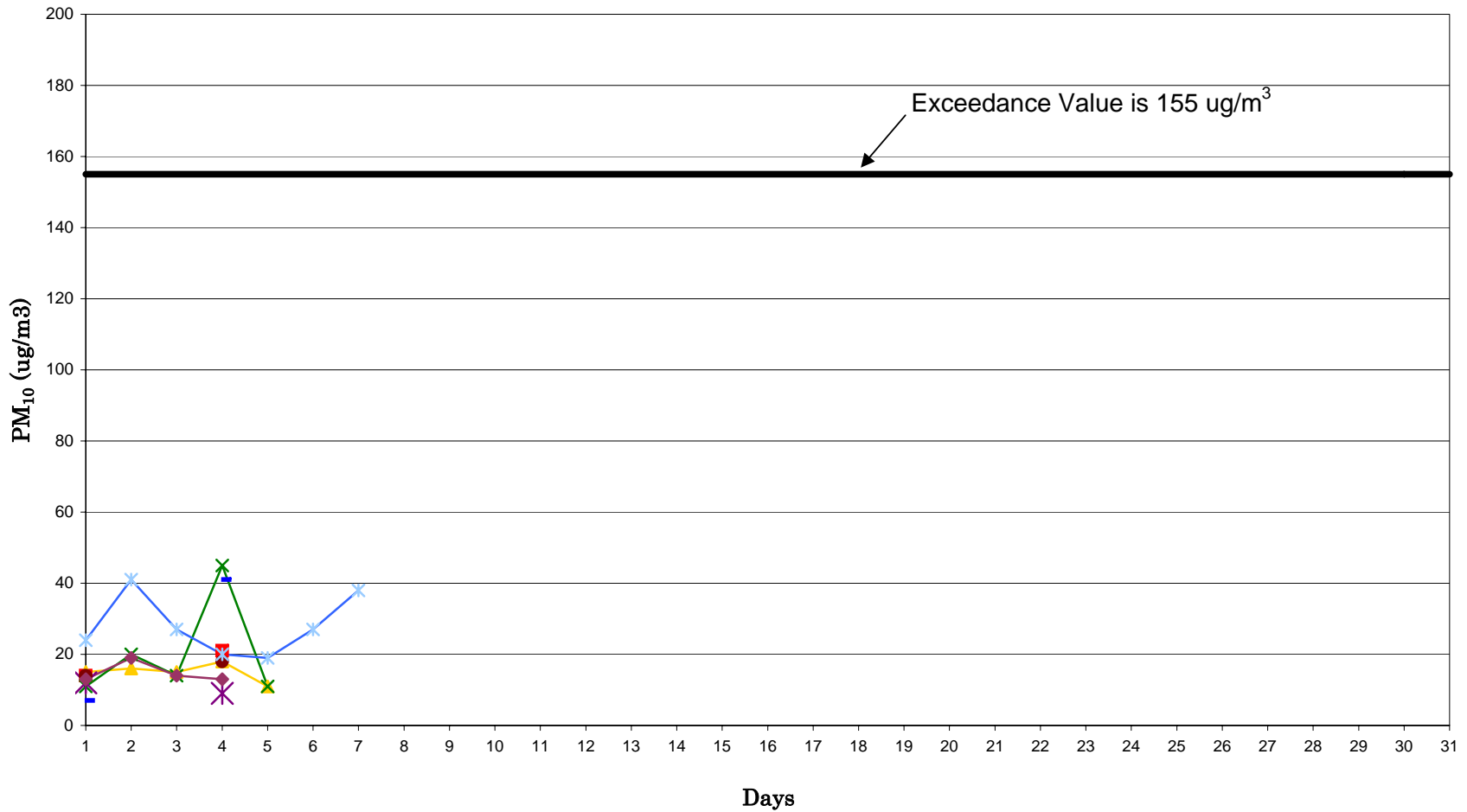


Utah 24-hr PM₁₀ Data September 2009

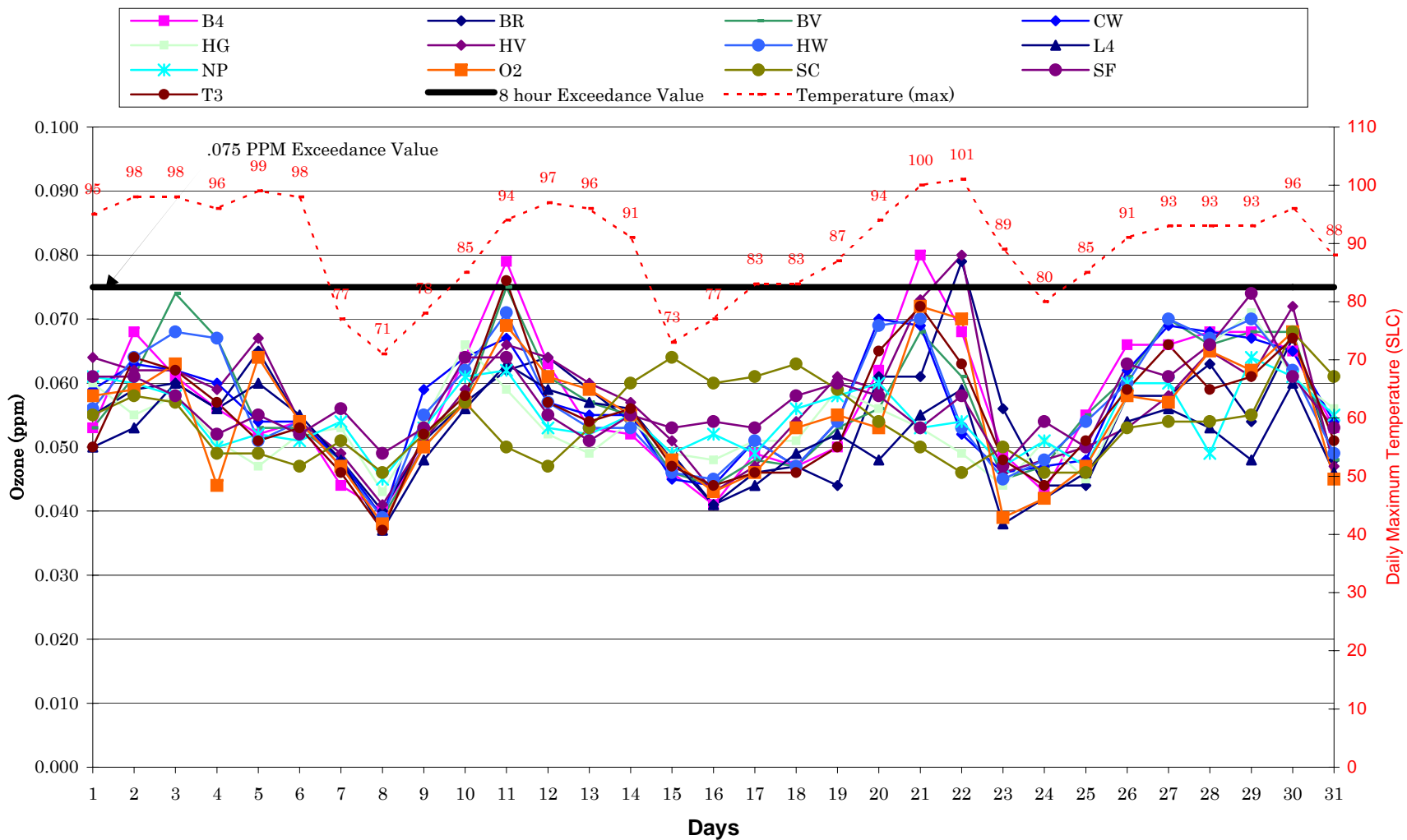


Utah 24-hr PM₁₀ Data October 2009

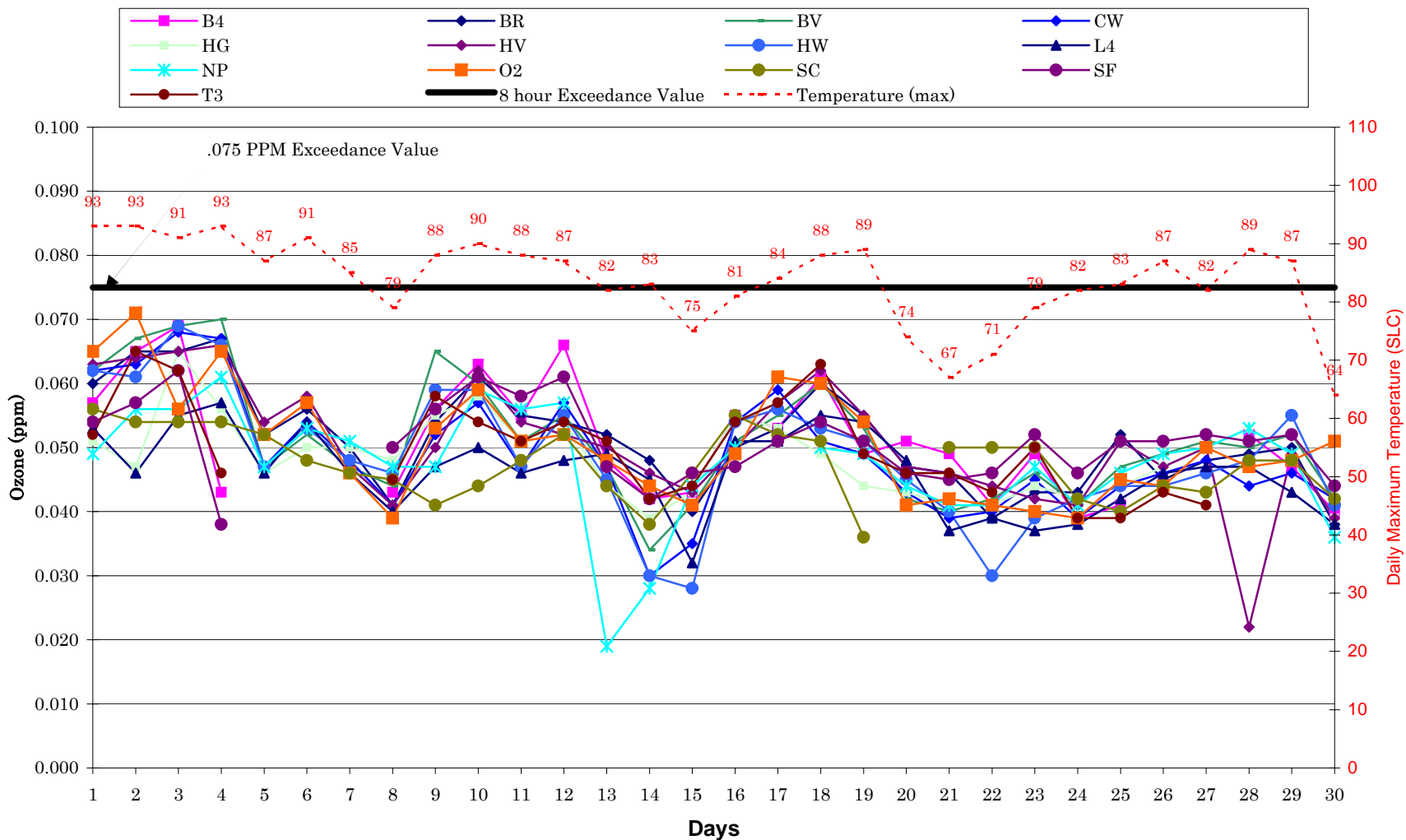
- Cottonwood
 - × Lindon
 - Magna
 - * North Salt Lake
 - ▲ Hawthorne
 - ✱ Logan
 - North Provo
 - ◆ Ogden
- 24-hr Exceedance Value is 155 ug/m³



Highest 8-hr Ozone Concentration & Daily Maximum Temperature August 2009



Highest 8-hr Ozone Concentration & Daily Maximum Temperature September 2009



Highest 8-hr Ozone Concentration & Daily Maximum Temperature October 2009

