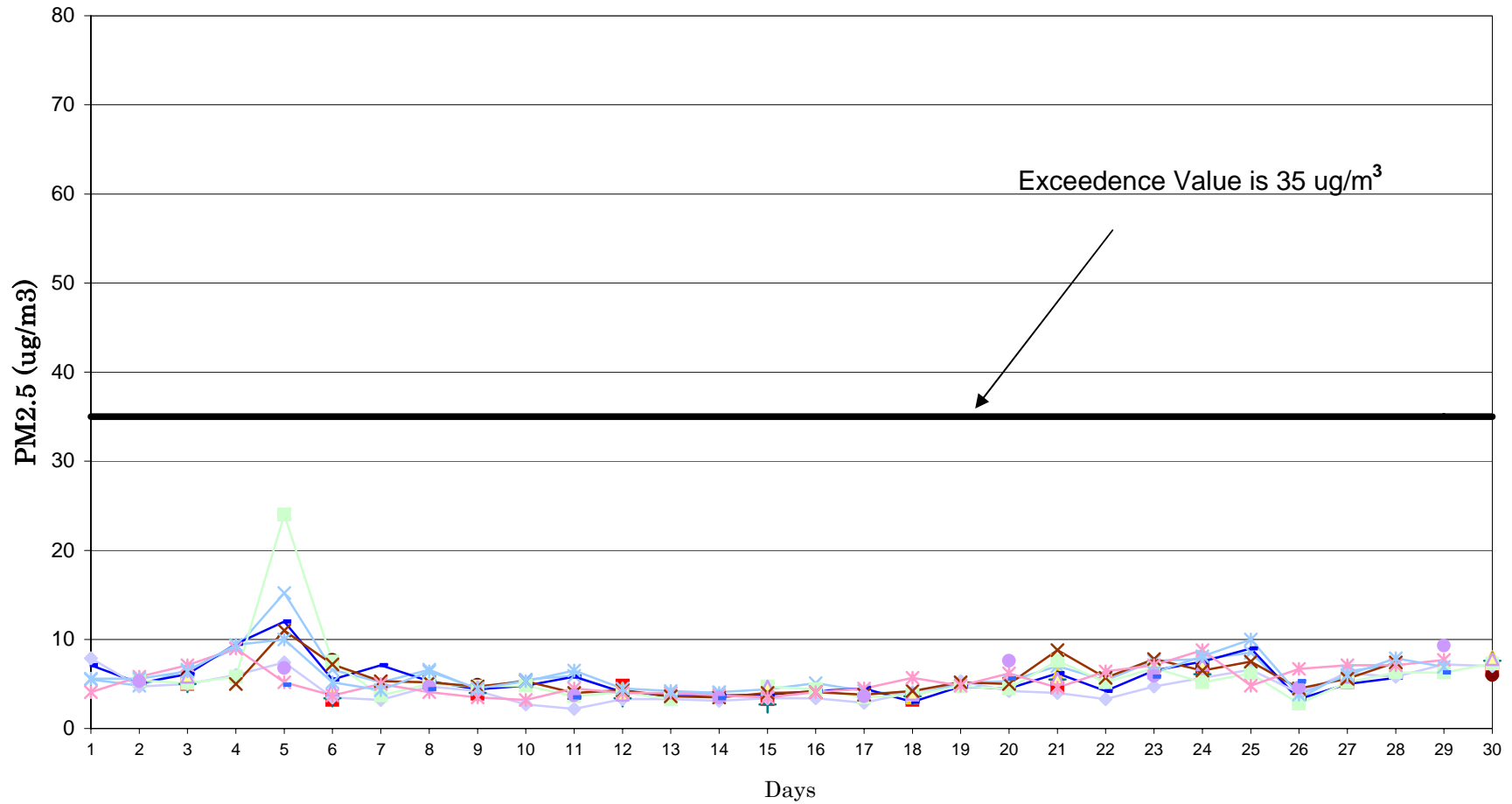


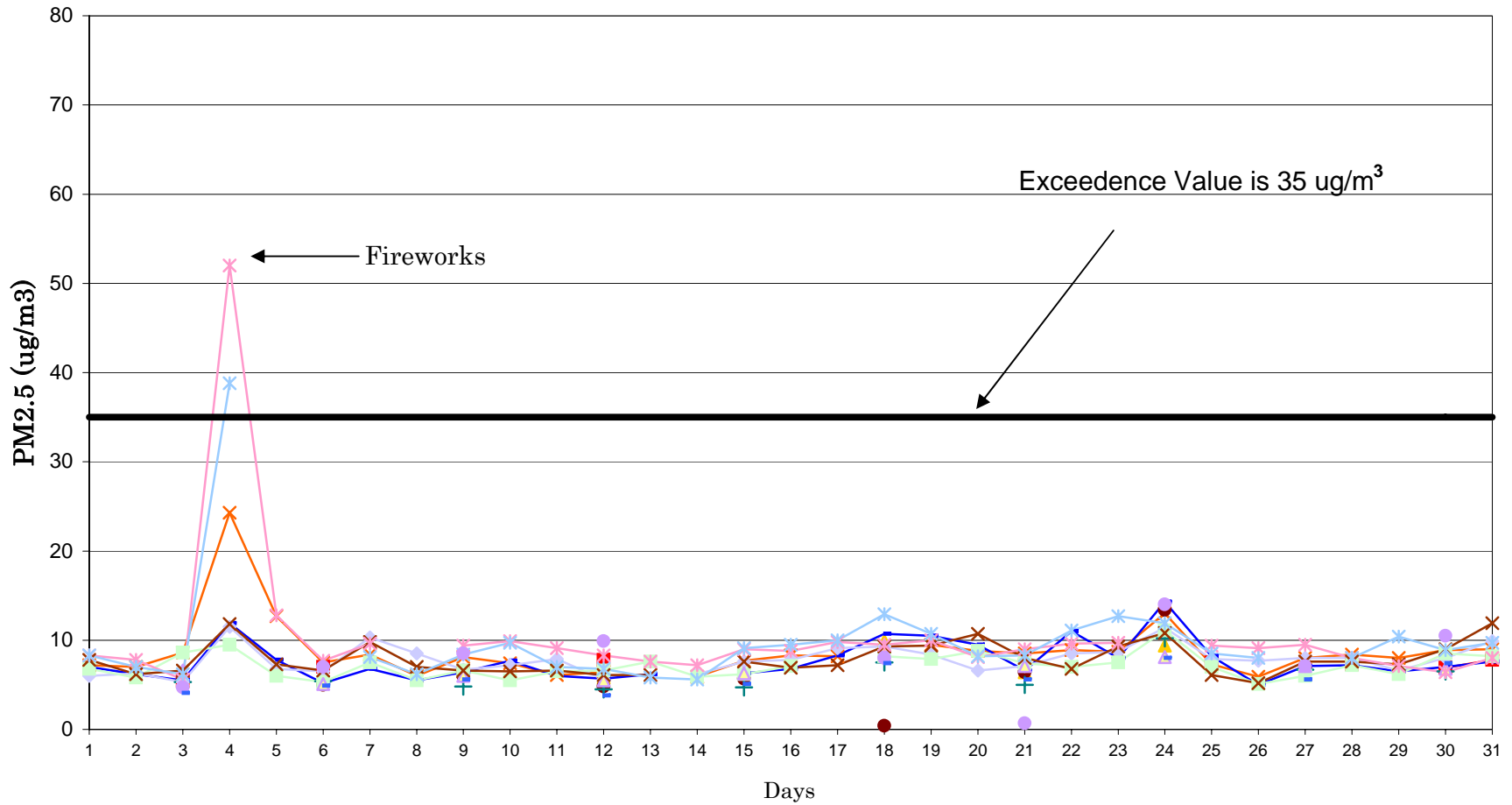
Utah 24-Hr PM2.5 Data June 2009

- Brigham City
 - Cottonwood
 - Harrisville
 - Logan
 - Magna
 - Ogden
 - Spanish Fork
 - Bountiful
 - Highland
 - Hawthorne
 - Lindon
 - North Provo
 - Rose Park
 - Tooele
- 24-hr Exceedence Value is 35 ug/m³



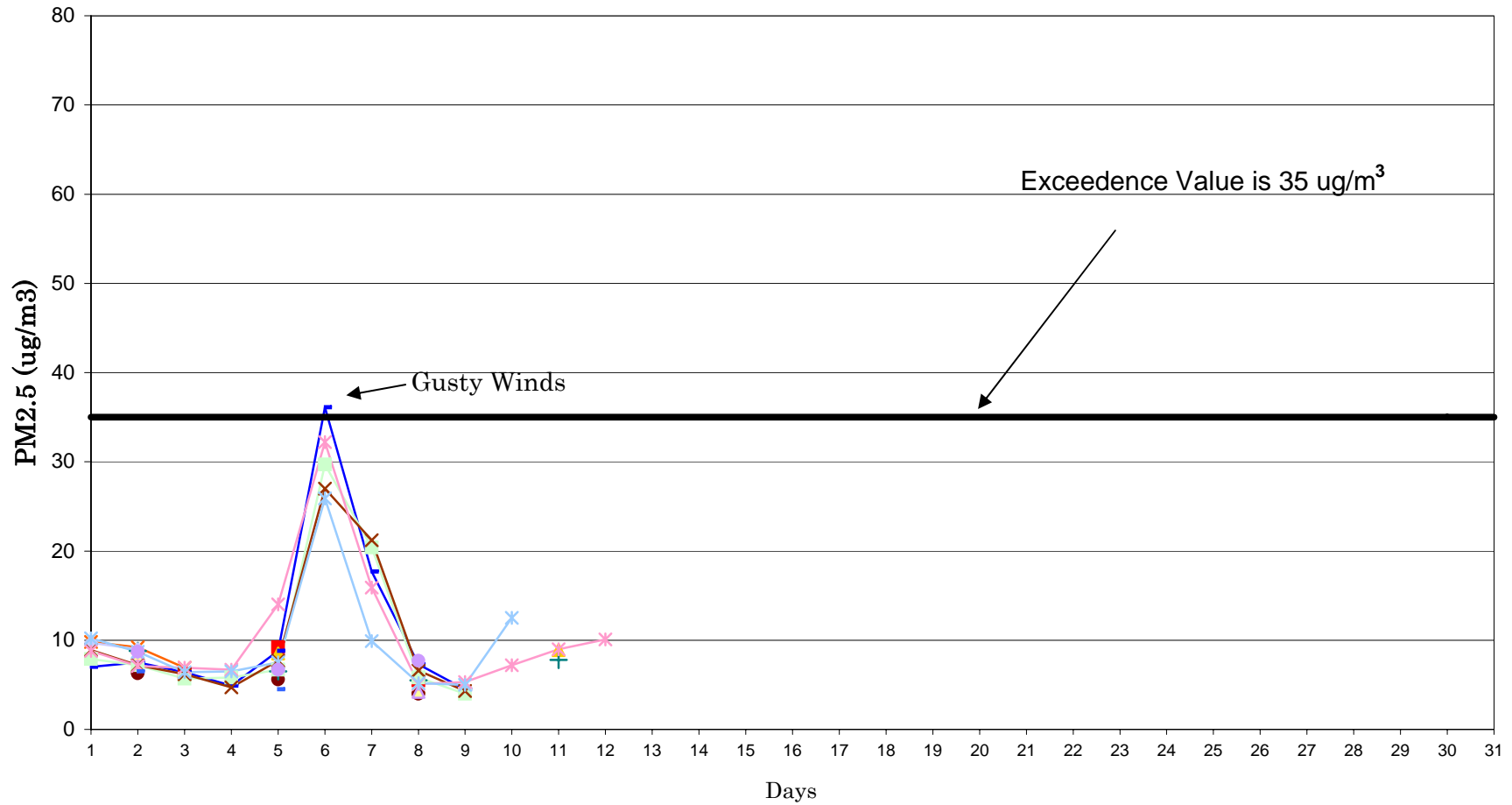
Utah 24-Hr PM2.5 Data July 2009

- Brigham City
- Cottonwood
- Harrisville
- Logan
- Magna
- Ogden
- Spanish Fork
- Bountiful
- Highland
- Hawthorne
- Lindon
- North Provo
- Rose Park
- Tooele
- 24-hr Exceedence Value is 35 ug/m3



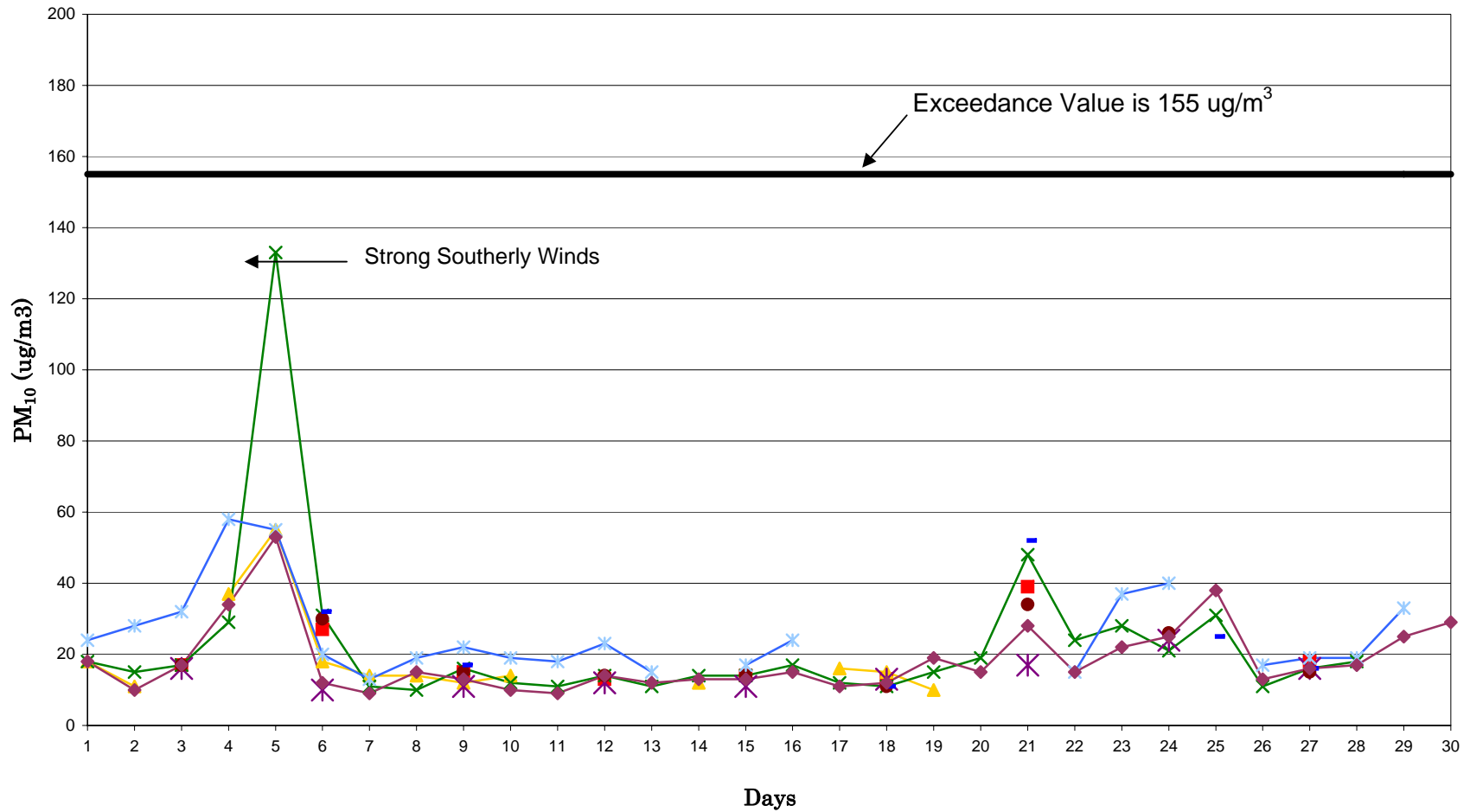
Utah 24-Hr PM2.5 Data August 2009

- Brigham City
- Cottonwood
- Harrisville
- Logan
- Magna
- Ogden
- Spanish Fork
- Bountiful
- Highland
- Hawthorne
- Lindon
- North Provo
- Rose Park
- Tooele
- 24-hr Exceedence Value is 35 ug/m³



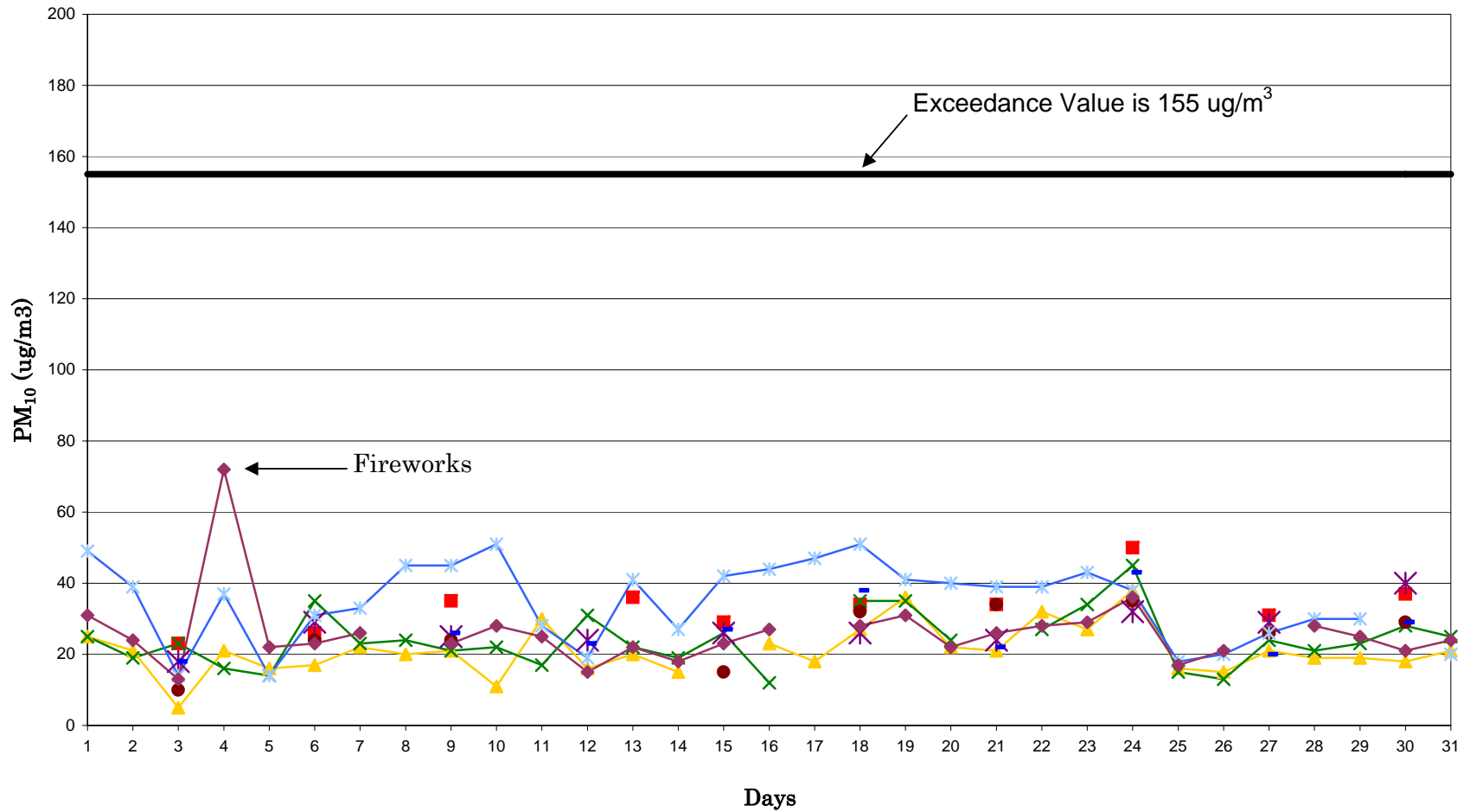
Utah 24-hr PM₁₀ Data June 2009

- Cottonwood
 - × Lindon
 - Magna
 - * North Salt Lake
 - ▲ Hawthorne
 - ✱ Logan
 - North Provo
 - ◆ Ogden
- 24-hr Exceedance Value is 155 ug/m³

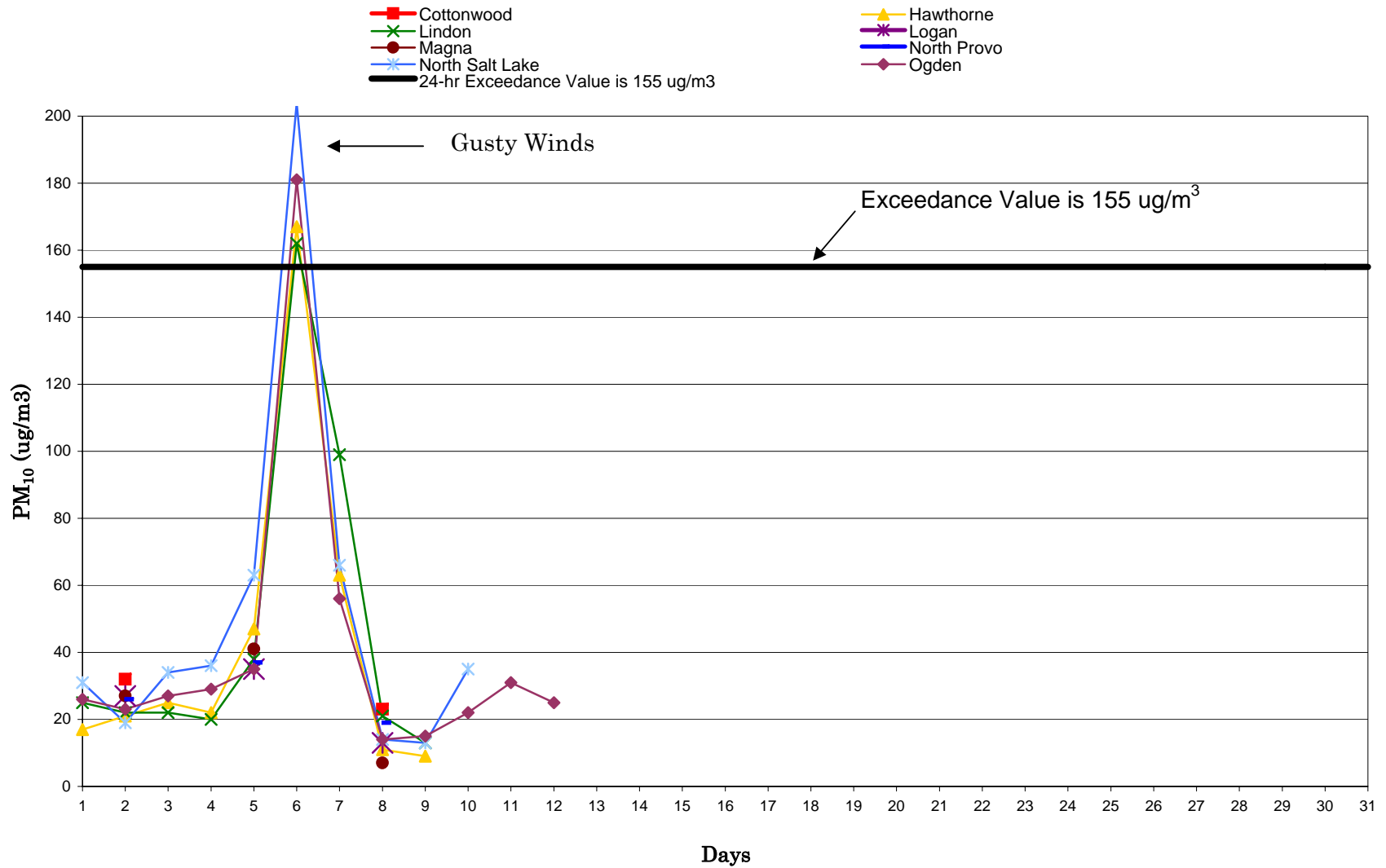


Utah 24-hr PM₁₀ Data July 2009

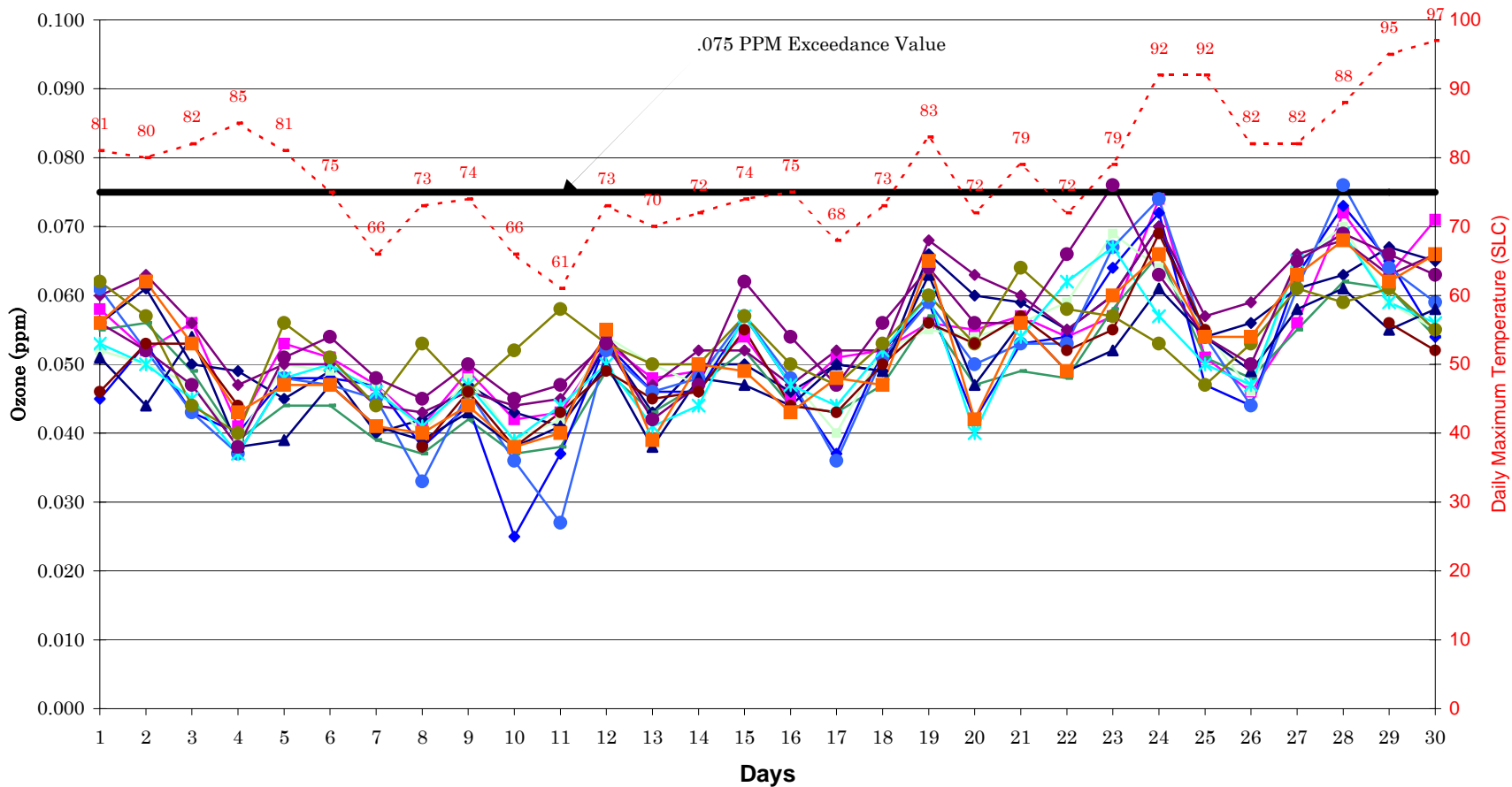
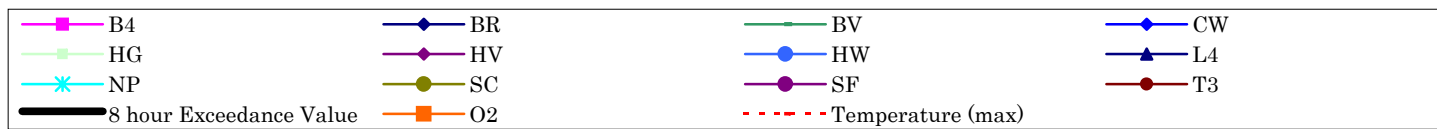
- Cottonwood
- Lindon
- Magna
- North Salt Lake
- Hawthorne
- Logan
- North Provo
- Ogden
- 24-hr Exceedance Value is 155 ug/m³



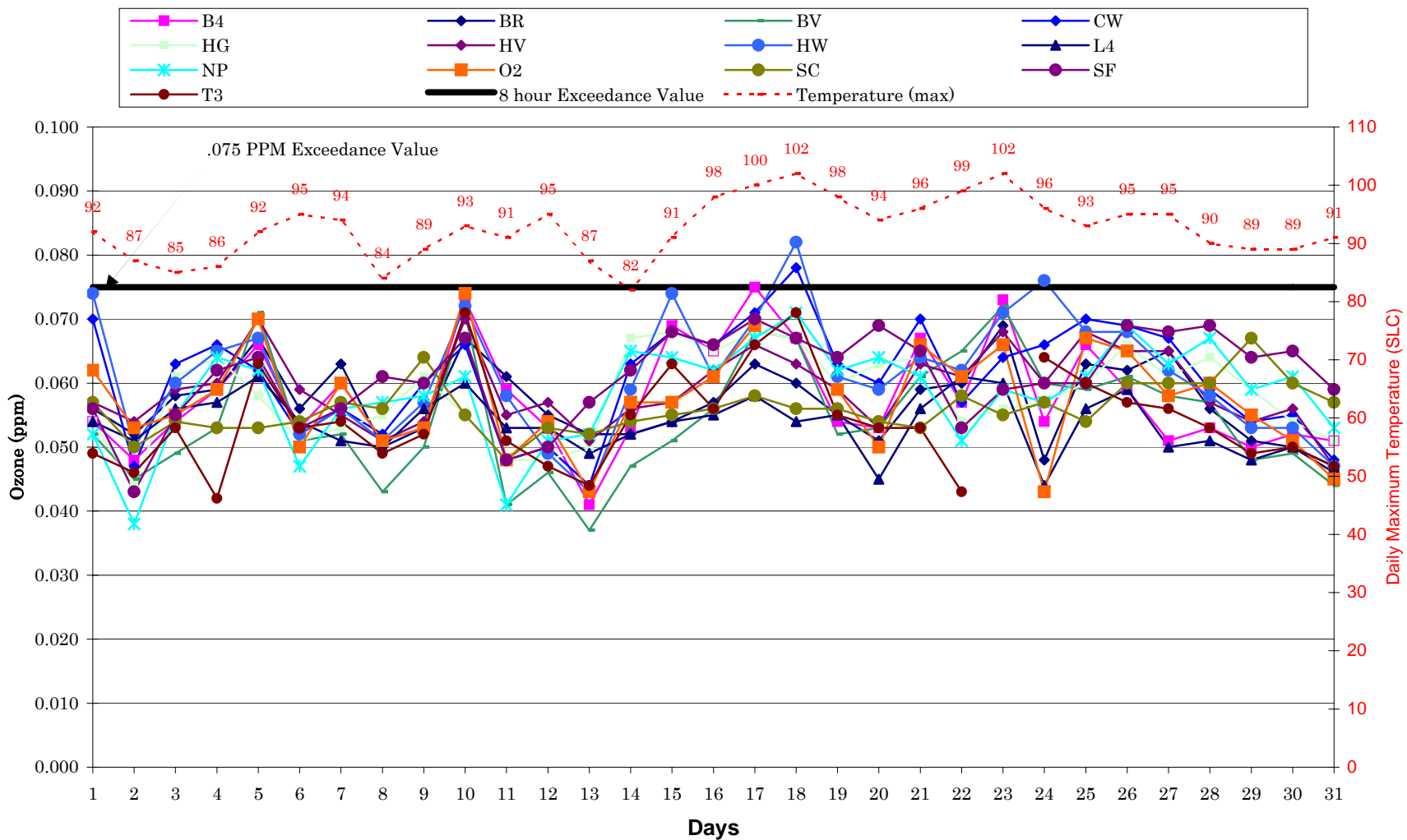
Utah 24-hr PM₁₀ Data August 2009



Highest 8-hr Ozone Concentration & Daily Maximum Temperature June 2009



Highest 8-hr Ozone Concentration & Daily Maximum Temperature July 2009



Highest 8-hr Ozone Concentration & Daily Maximum Temperature August 2009

